



Additix PE

Thixotropising powder for epoxy and polyurethane resin



WHERE TO USE

Additix PE is a very light powder made from synthetic fibres and is used to increase the viscosity and thixotropy of epoxy-based and polyurethane-based resin products.

Some application examples

- Making epoxy grout from fluid resin;
- Making orange-peel effect finishes;
- Making epoxy mortar for skimming and repairing surfaces, including vertical surfaces.

HOW TO USE

Add as much **Additix PE** as required to the resin to be thickened until the required consistency is obtained.

To obtain an orange-peel effect finish with epoxy or polyurethane resin, we recommend mixing the product to be applied with 1.5-2% in weight of **Additix PE**. For skimming products or grout to be applied on vertical surfaces or surface with a steep slope, increase the dose until the consistency required is obtained. When repairing holes, gaps, joints, etc., add **Additix PE** to the resin until the consistency required is obtained.

Mix **Additix PE** into the resin with an electric mixer to form an even, lump-free mix.

Adding **Additix PE** will have a strong effect on its colour and will turn it white if it hasn't been pigmented.

CONSUMPTION

Depending on area of use; from 1.5% to 5% in weight of the epoxy or polyurethane to be used.

COLOUR

White.

PACKAGING

1 kg tubs.

STORAGE

Store the product in its original packaging in a dry area.

SAFETY INSTRUCTIONS FOR PREPARATION AND APPLICATION

Additix PE is not considered hazardous according to current norms and guidelines regarding the classification of mixtures. However, we recommend the use of protective gloves and goggles, and to take the usual precautions for handling chemical products. For further and complete information about the safe use of our product please refer to the latest version of our Material Safety Data Sheet.

PRODUCT FOR PROFESSIONAL USE.

WARNING

Although the technical details and recommendations contained in this product data sheet correspond to the best of our knowledge and experience, all the above information must, in every case, be taken as

Additix PE

TECHNICAL DATA (typical values)

PRODUCT IDENTITY	
Colour:	white
Density (kg/m ³):	960
Swelling in water (%):	0
Length of the fibres (mm):	0.10-0.25
Thickness of the fibres (µm):	approx. 6
Fibre content per gram of product:	approx. 150,000,000
Surface area of the fibres (m ² /g):	approx. 7.5
Melting point:	132°C
Structure of fibre:	branched
Volumetric weight (g/l):	approx. 40



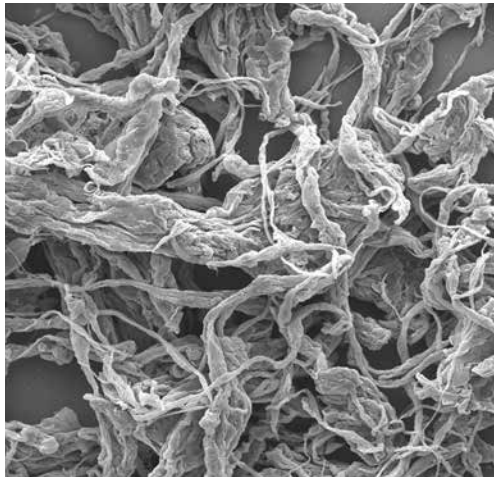
Primer MF thickened with Additix PE



Grouting a joint with Primer MF admixed with Additix PE



Mixing Additix PE in Primer MF



Microscope photo of Additix PE.

merely indicative and subject to confirmation after long-term practical application; for this reason, anyone who intends to use the product must ensure beforehand that it is suitable for the envisaged application. In every case, the user alone is fully responsible for any consequences deriving from the use of the product.

Please refer to the current version of the Technical Data Sheet, available from our website www.mapei.com

All relevant references for the product are available upon request and from www.mapei.com



BUILDING THE FUTURE